



FKK Corporation

PELLET IGNITER

2014 Catalogue

Biomass hot surface igniters

Biomass wood pellet, chips, corn, hot surface ignition components

45s to 1000°C

Non aging

Made in Japan

Introducing the PSx[®] series ceramic biomass igniters range, an advance in ignition technology for solid fuels.

FKK Corporation specialises in ceramic hot surface igniters and has many years of experience of working closely with customers to develop bespoke solutions for innovative appliances manufacturers. We are a trusted supplier of hot surface ignition products to many industry sectors.

These advanced igniters are simply the best for lighting pellet and biomass burners. They use only a fraction of the energy required by hot air fans and ignition blowers and will light all fuel types. Ideal for wood pellets, corn, maize, coal, coke etc.

With a considerably higher temperature, around twice that of traditional metal sheathed products, ignition times are reduced to as little as 60 seconds. This makes them significantly more economical in use.

All our range can be customized to fit perfectly in your appliance.

Ceramic ignition technology benefits

- A fraction of the energy consumption compared to conventional heater
- Long lasting (non aging)
- Time to ignition 60~90 seconds
- Tested to 100,000 cycles, used for long time in Japanese market (15 years)
- Easy to install and retrofit
- Fits any steel tube with an inner diameter of >18mm
- 1000°C at steady-state temperature
- Cannot overheat even with blower failure
- Available in 120V / 220 / 240VAC
- Fully electrically insulated with no exposed electric contacts
- UL/CE certified wiring (200 to 500°C heat resistant wire)
- Impervious to oxidation and corrosion
- Dimensions: l = 96mm, d = 16mm (PSx-1)
- Ignite wood chips, split logs, coal briquettes or other biomass, corn etc
- Comply with RoHS, REACH regulation on Hazardous Substances

Systems

- Pellet Stove
- Pellet Boiler
- Pellet Burner

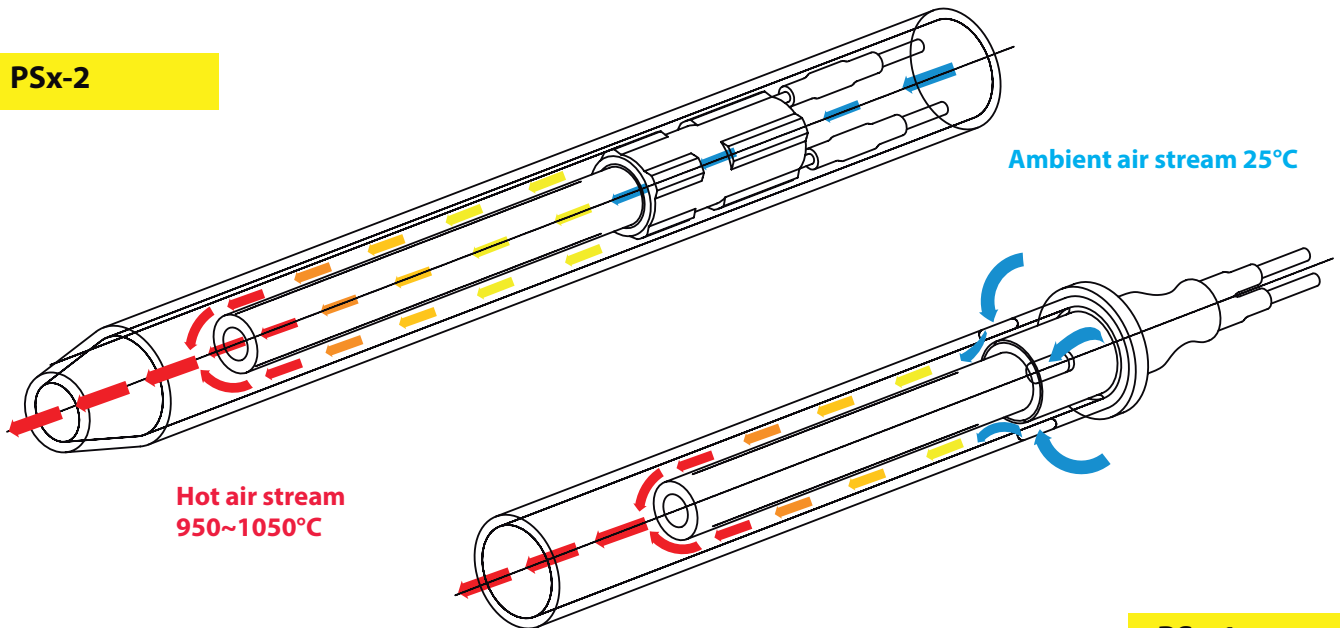


A revolutionary way to ignite biomass

PSx® series igniters revolutionize biomass heating appliances ignition process. FKK develop two type to fit in every appliances:

Blowing air type ceramic igniters have a through hole that let air through the heating element body. With this structure ignition performance can be increase by 1.4 times.

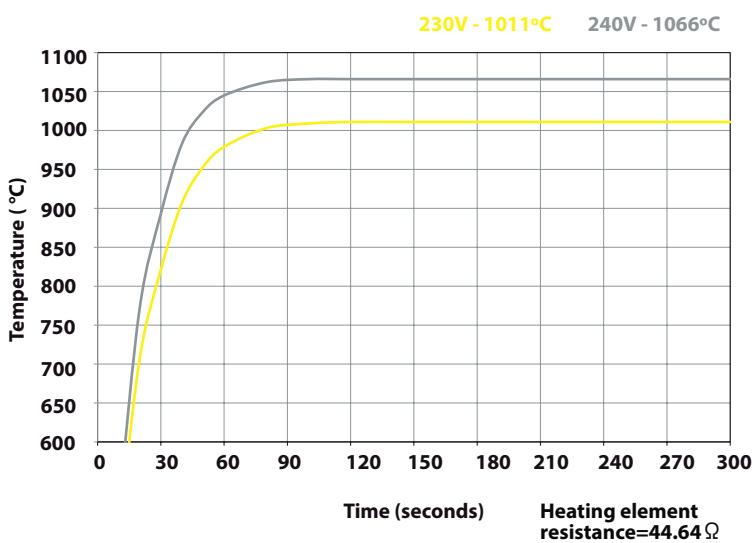
PSx-2



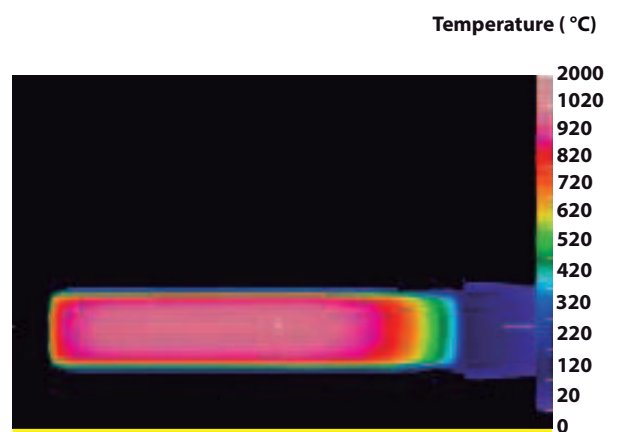
PSx-1

Radiant type ceramic igniters, use radiant heat effect to heat surround air for indirect ignition of pellet.

Rising temperature



Heat distribution



PSx series igniters line up

A simple and efficient solution for pellet ignition

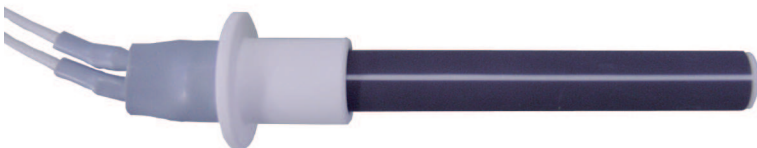
Application

Heaters suitable for ignition of wood pellet, logs, woodchips, coal for stoves, boilers and burners.

Features

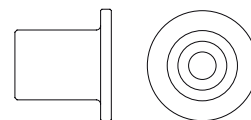
- Tested to 100,000 ON/OFF cycles.
- Fast ignition time (60~90s to ignite pellet according to burner)
- Wiring available in UL or CE certified version.
- Totally customizable solution, many design available
- 240W and 300W type
- Available in 120V , 230V, 220~240V

Line up



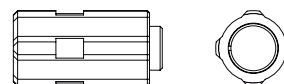
PSx-1

26mm ceramic flange
Surround air radiant type



PSx-2

17mm ceramic flange
Blowing air type



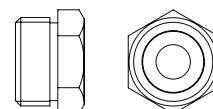
PSx-3 / PSx-4

No flange, perfect retrofit solution
Blowing air or radiant type available



PSx-6 / PSx-7

G3/8" threaded flange fixed on heater
Blowing air or radiant type available



All drawings and data-sheets are available for download at : www.fkk-corporation.com/en/download


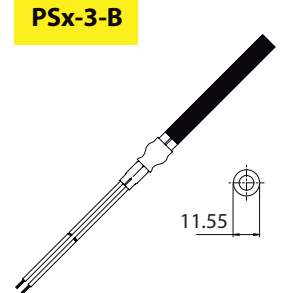

You can also scan the QR code to go directly on the related page



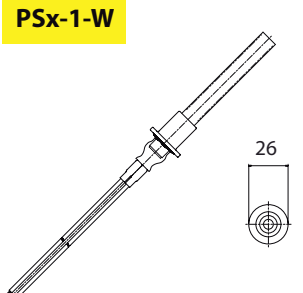
Line up

Unit (mm)

300W Class - Black coating alumina heaters (B)

<p>PSx-1-B</p>  <p>300W - 1050°C</p>	<p>PSx-2-B</p>  <p>300W - 1050°C Blowing air</p>	<p>PSx-3-B</p>  <p>300W - 1050°C</p>	<p>PSx-4-B</p>  <p>300W - 1050°C Blowing air</p>
<p>PSx-5-B</p>  <p>300W - 1050°C</p>	<p>PSx-6-B</p>  <p>300W - 1050°C</p>	<p>PSx-7-B</p>  <p>300W - 1050°C Blowing air</p>	

240W Class - White coating alumina heaters (W)

<p>PSx-1-W</p>  <p>240W - 970°C</p>	<p>PSx-3-W</p>  <p>240W - 970°C</p>	<p>PSx-4-W</p>  <p>240W - 970°C Blowing air</p>	<p>PSx-6-W</p>  <p>240W - 970°C</p>
--	---	--	---

Type	Reference	Flange type	Heater length (mm)	Available voltage (V)	Cable length (mm)
300W	PSx-1-240-B	Ceramic 26mm	107	220~240V	350mm *All lengths available upon request
	PSx-2-240-B	Ceramic bushing 17.7 mm	113	220~240V	
	PSx-3-240-B	Flange less - Retrofit	107	220~240V	
	PSx-4-240-B	Flange less - Retrofit	107	220~240V	
	PSx-5-240-B	G1/2" flange 23mm	107	220~240V	
	PSx-6-240-B	G3/8" flange 17mm	107	220~240V	
	PSx-7-240-B	G3/8" flange 17mm	107	220~240V	
240W	PSx-1-120-W	Ceramic 26mm	107	120, 230V	
	PSx-3-120-W	Flange less - Retrofit	107	120, 230V	
	PSx-4-120-W	Flange less - Retrofit	107	120, 230V	
	PSx-6-120-W	G3/8" flange 17mm	107	120, 230V	

FKK corporation

www.fkk-corporation.com

Head office / Sales

11 Tsutsumisoto-cho Kisshoin
Minami-ku, 601-8399 Kyoto, Japan

Department Plug Heater
TEL +81(0)75-314-8760
FAX +81(0)75-314-4167
international@fkk-corporation.com



Distributors

Europa main distributor

Mercobel B.V.A
Moerenakker 44 BE-9070 Destelbergen, Belgium
TEL+32 (0) 9 232 49 75 FAX +32 (0) 9 230 18 02
info@mercobel.be - www.mercobel.be

Greece sub-distributor

Energy Footprint - www.energy-footprint.gr

Italia/North-France sub-distributor

DZ Group - www.dzbenelux.be

Spain/Portugal sub-distributor

Drac - www.dracsl.com

Canada / USA main distributor

Crystal Technica Ltd.
11b Depot Street, South Grafton, Massachusetts, 01560, USA
TEL +1 508 839 0013 FAX +1 508 519 0397
info@crystaltechnica.com - www.crystaltechnica.com

Russia main distributor

FKK Corporation Russia
Reshetnikova str.15, office 118, St. Petersburg, 196105, Russia
TEL +7 812 360 83 45 FAX +7 812 709 08 43
dt@fkk-corporation.ru - www.fkk-corporation.ru

South Korea main distributor

Samson Corporation
Guro 3dong Guro-gu, Seoul,152-775, South Korea
TEL +82 - 2 - 2025 - 1113 FAX +82 - 2 - 2025 - 1115
hspark@samsonmed.co.kr